

Highways Social Value Case Studies

Rosgals - Areas 2 (Brooks Bar junction to Seymour Grove/Manchester Road junction) and 3A (Seymour Grove/Manchester Road junction to Metrolink Bridge) of the Manchester to Chorlton Cycleway.

Hardy Farm:



Territorial Army Car Park:



As part of their social value commitments, Rosgals have restored the Territorial Army car park in Whalley Range and have improved the walking facilities by Hardy Farm which is situated near West Didsbury and Chorlton Football Club. Both requests required debris clearances, extensive machinery dig-outs and restorations of surfaces. The pictures show the completed activities.

Rosgals – Chapel Street - Community action day

The Neighbourhood Officer for Levenshulme, arranged a community action day for Chapel Street. The aim of the day was to revitalise the grassy area, planters and build some bee hotels.



Mark asked for a tonne of compost and for the three planters to be emptied.

"Kerry from Rosgal's kindly offered to support us and with her amazing team they were able to meet all our asks and make the whole process very simple- with excellent communication".

Hopkins

Hopkins donated 10 laptops to Loreto High School in Chorlton, to facilitate pupils to access their online learning platforms during the pandemic. During the pandemic, it has been widely reported that, unfortunately not all pupils have devices at home to access online lessons and workgroups or are working from devices unsuitable for long term use.

Speaking about the donation, Noel Hopkins CEO at J Hopkins said: After hearing that local school children are still struggling to access their work remotely, we got in touch with our IT partners, Concise Technologies, to see if together we could help. Concise had made sure our entire business could operate remotely last March and they managed to source 7 laptops for us to donate quickly due to their contacts, Concise then very kindly rounded the donation up to 10 laptops for the school.



Bethell's

Bethell's Social Value lead reached out to the homeless charity 'Mustard Tree' following the launch of their 1000 egg challenge. With a target of 1000 egg donations that could be distributed to their charity shops, Bethell committed to donating 1000 easter eggs. Liaising with Community Fundraising and Events Coordinator, Laura Burton, Bethell were able to deliver all 1000 eggs to their HQ in Ancoats Manchester where volunteers were on hand to help unload.

Bethell made contact with Read Manchester to find out how they could assist and get involved.



Bethell's supported by offering to deliver as many books to as many local schools as possible. Liaising with their transport department, they scheduled for their 100% electric van to be available to carry out the deliveries. The team managed to deliver to over 13 schools on North and South Manchester just in time for the Easter half term.



Dowhigh



Dowhigh expressed an interest in becoming a supporter of the 2022 'Our Year' initiative by providing resources and donations. Dowhigh have donated £500.00 towards either Equipment or towards Youth initiatives. Dowhigh would like the 'Our Year team to use their professional experience and knowledge to indicate which area of resources would be best placed to accept this donation.

Dowhigh New Islington Free School – Green Screening



Dowhigh have also donated green screening materials to New Islington Free School to help improve the play experience for our pupils. Due to the location of our school, the playground was extremely exposed.

Headteacher Tabitha Smith said: "The screening looks fabulous, has drawn very positive comments from our parents and staff, and also ensures our children are safeguarded.

Many thanks to Dowhigh for this donation".



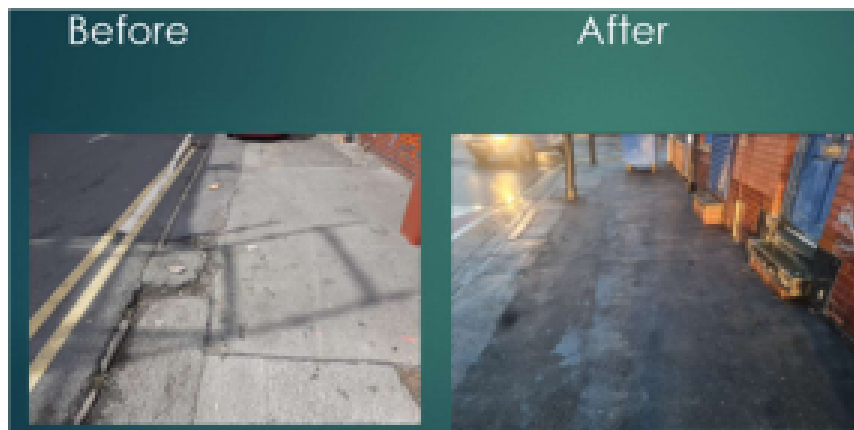
Gaist

St Chad's RC Primary in Cheetham have started a wonderful project to convert some unused land into a community garden and outdoor classroom but required a donation to help purchase some of the materials required.

As part of their social value commitments to Manchester, Gaist donated £250 towards the project. This will go towards the raised planting bed for community veg growing, composting, a pond and bug/beetle hotels.

Thermal Road Repairs

As part of their SV commitment to MCC, Thermal Road Repairs completed a patching job in Northenden. The following works were completed:

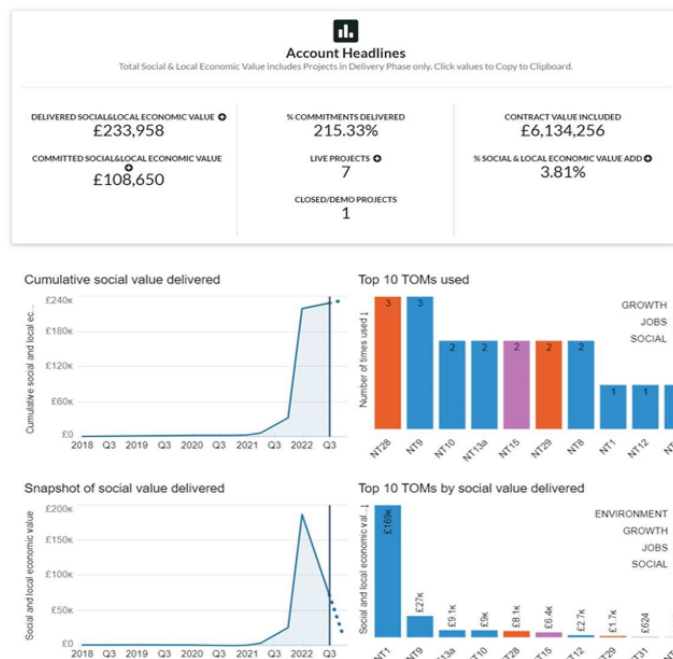


- Survey area
- Prepare and level the existing failed footway areas.
- Treat with bond coat.
- Minor repairs to edging.
- Repair footway area using Thermal Road in situ recycling process.

Network Management

The dashboard below outlines the social and local economic value that suppliers have committed to and delivered throughout the duration of their Network Management contracts with MCC Highways.

The data below covers the following contracts: TC1039 (Winter Gritting), TC205 (Water Features), TC999 Automatic Bollard Maintenance, TC1036 Road Asset Management System, TC1056 Skid Resistance Framework, Small Patching Works and Bridge Inspections. The information provides a monetary overview and four graphs. The second graph breakdowns how suppliers have delivered their social value and indicates the ten most popular measures used throughout the contracts. The bar chart uses different colours to show which target area the social value is contributing to, for example blue relates to jobs, orange is social, and purple is growth. The fourth graph demonstrates the ten most popular measures used by suppliers, the colours are the same as in graph two but an additional colour of green has been added for the inclusion of environmental measures. There is also a key explaining what each of the National Themes, Outcomes and Measures stands for.



National TOMs (Theme, outcome and measures) Key:

NT1: Number of local direct employees (FTE) hired or retained (for re-tendered contracts) on contract for one year or the whole duration of the contract, whichever is shorter

NT2: Percentage of local employees (FTE) on contract

NT8: Number of staff hours spent on local school and college visits e.g. delivering careers talks, curriculum support, literacy support, safety talks (including preparation time)

NT9: Number of weeks of training opportunities on the contract (BTEC, City & Guilds, NVQ, HNC) that have either been completed during the year, or that will be supported by the organisation until completion in the following years - Level 2,3, or 4+

NT10: Number of weeks of apprenticeships on the contract that have either been completed during the year, or that will be supported by the organisation until completion in the following years - Level 2,3, or 4+

NT12: Number of weeks spent on meaningful work placements or pre-employment course; 1-6 weeks student placements (unpaid)

NT13a: Number of weeks spent on work placements that pay Real Living wage according to eligibility - 6 weeks or more (internships)

NT15: Number of staff hours providing expert business advice to VCSEs and MSMEs (e.g., financial advice / legal advice / HR advice/HSE)

NT28: Monetary donations or in-kind contributions to local community projects (£ & materials)

NT29: Number of staff volunteering hours/time provided to support local community projects

Appendix 4: Manchester North Social Value Case Studies

NMGH – Morgan Sindall

T LEVELS
THE NEXT LEVEL QUALIFICATION

STUDY A T LEVEL AT THE NUMBER 1 COLLEGE IN GREATER MANCHESTER FOR OVERALL ACHIEVEMENT.

Our courses are co-developed and co-delivered with leading employers!

CAREER JOURNEY: Mustaffa Wafa
Studying T-Level design, surveying and planning in construction at Manchester College

North Manchester General Hospital Project

All about me....
Tell us a bit about yourself
I live in Blackley, have lived there since I was 5-years old. I went to primary school and high-school in Blackley and Crumpsall, the high-school I studied at was Crumpsall Lane high-school which is round the corner from the hospital. Both of my parents moved here from Afghanistan 20-years ago, my dad was training to be a Structural Engineer in Afghanistan but due to the war he had to move to Pakistan and became a tailor until he moved over to the UK and opened his own tailoring business. With my dad wanting to work in construction/become a structural engineer when he was younger this is what made me look into it as a career.

Anything to add ?
I am looking to go into the Structural Engineer role in the future, so it has been good to see on this project how the building starts from out of the ground to be a complete frame.
If I was to go onto a project that was further developed, I may not have learnt as much about this aspect which is what I wanted to see more.

What did you do before you started your role here at MS?
I am currently a T-Level student studying from Manchester College, this involves design, surveying and planning in construction. I am currently undertaking 3 placements at 2 different Morgan Sindall projects starting in November 2022 and ending in March 2023. I am currently on the NMGH MSCP project which is great for me as I live local to here and see it on the bus all the time when I am going past. I have also already had a small placement at Laing O'Rourke at a Leisure Centre opposite my old high school.

What was your routeway into the industry?
The majority of my family already work in the industry as either engineers, structural engineers, or Architects. This pushed me into looking at construction as an industry to work in as it seems interesting and has many possibilities.

What inspired you / why did you want to do the role you are currently doing?
I wanted to go down this route as I know my dad would have been doing this if it wasn't for the circumstances at home before moving to the UK. It is also interesting for me to see how buildings go together and being able to tell my family/friends that I have built/worked on a building is an exciting thought for me.

Manchester University NHS Foundation Trust

MORGAN SINDALL CONSTRUCTION

let's get digital

4TH-24TH MARCH

CONNECT WITH US

Find out more at www.letsgetdigitalmanchester.com

ROADSHOW



Digital Roadshow:



Although Manchester has a very strong and resilient digital sector and ecosystem, statistics show that North Manchester wards are underdeveloped compared to other parts of the UK. Reducing the impact of digital exclusion and inequalities across North of Manchester is a key priority and will be paramount in helping residents to access training and employment opportunities in addition to other online services such as booking medical appointments, housing, benefits, banking, transport, and shopping whilst also connecting people to one another to combat loneliness and isolation.

Arcadis and Hive Projects secured 40,000 euros of funding to create a new digital hub to reduce the 'digital divide' in North Manchester. Supported by Manchester City Council's digital and work and skills teams, the funding allowed those working on the North Manchester General Hospital redevelopment to deliver 'Connect with Us', a four-week roadshow held across 10 dates in March that comprised taking new digital hardware and educational support to the north Manchester community. Each day coincided with a theme linked to employment and skills, wellbeing, money saving tips and advice and healthy start vouchers for new parents.

At No.93 Wellbeing Centre in Harpurhey, Hive's Social Value Manager Nin helped a lady who had struggled to book blood test appointments with her GP and whilst she had the NHS app, she was unsure how to use it. Nin spent time with the local resident to upload her photographic I.D and gave demonstrations of the NHS app so that she would be able to book GP and hospital appointments going forward. The resident was truly grateful by this small gesture and knowing how to utilise the app will make booking medical appointments much easier going forward. During this session, Manchester City Council's Digital Inclusion Officer Grace Perks signposted a local resident who could read but not write to access adult learning services through Manchester Adult Education Services (MAES). Another resident was also benefited by the roadshow when realising she was eligible for a free device.

The roadshow is the first phase of our digital offering and once complete, the team will create a lending service to North Manchester libraries and learning centres to ensure this much needed digital upskilling can continue. Phase 2 will see 15 pieces of hardware located in Morgan Sindall's Knowledge Quad; an onsite learning and training facility situated on the North Manchester General Hospital campus. The Knowledge Quad will be operational from the 21st March where education, employment and training activities will be offered to the local community.

NORTH VIEW - IHP

Supporting Greater Manchester Health & Social Care Partnership's new 'Green Social Prescribing' (GSP) initiative, being delivered by social enterprise, Sow the City.

The GSP initiative enables GPs, other health and care practitioners and local agencies to refer people to nature-based interventions and activities, such as local walking for health schemes, community gardening and food-growing projects.

The project team supported this initiative with their supply chain partners by dismantling some disused polytunnels from a former allotment at the North Manchester General Hospital site, transport and reassemble them at three other working allotments, including re-covering them with new polythene and installing new doors, and supplying a new welfare cabin and electrical connections at the Ryder Brow site.

The Ryder Brow community gardeners said: *"Words can't express how much your kind consideration has touched our hearts... thanks to your crew who delivered and constructed the polytunnel, installing the polythene and doors. It came just in time for the Grow Your Heritage project. A BIG THANKS too for arranging the donation of the cabin."* (10k value)



WHAT'S MY JOB

What's My Job' is an initiative run by the North Manchester Business Network, whereby local businesses visit primary schools in North Manchester to work with pupils teaching them about potential future career pathways.

NORTH VIEW - VCUK

Jennifer Aspinall Design Manager at VCUK joined a number of volunteers for a What's my Job session at St Patrick's School, the children were put into small groups and visited each volunteer with a set of questions, the session was a real eye opener for the children who all guessed Jennifer to be a teacher or teaching assistant, she then went onto explain the industry she works in, what she does on a day to day basis.

VICTORIA NORTH - FEC

Two members of the FEC team also supported the day by telling the children about their jobs and what they do at FEC. The children get lots of clues and then have to guess what the job roles are, this gives them an insight into the variety of opportunities, supporting and raising their career aspirations.

HIF – ARUP

Arup participated in a 'What's my Job' session at Irk Valley Community School.

NMGH – Manchester Foundation Trust

The Director of Strategic Projects attended at Irk Valley providing insight for young people about the different types of careers within the NHS



VICTORIA NORTH - FEC

A positive start to the quarter, organising the **Great British Spring Clean Event** at Angel Meadow Park. A mixture of 20 participants from FEC, MCC, Moodswings and Solid Ground attended completing a clean-up ready for Spring. A huge thank you to all our volunteers.

NORTH VIEW IHP

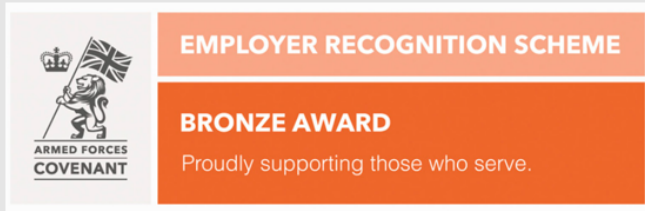
IHP team spent half a day at Crumpsall Park as part of British spring clean week (collected 6 bags of litter) and also provided 20 volunteer hours at Boggart Hole Cough.



MCC - Moston Juniors kit donated via the Highways Department



NMGH – Morgan Sindall



April – Students from Northridge SEN High School came and started work on painting the mural in the Knowledge Quad

May - Morgan Sindall are now a signed supported of the Employer Recognition Scheme in relation to the Armed Forces receiving the Bronze Award.